

## Electric Lane, SW9

2 bedroom flat to let

**£456 Per Week**

Part furnished

### Property Details

An immaculate two bedroom split level flat located in the heart of Brixton, Electric Avenue. The flat is split level which boasts a bright reception room and a fully integrated kitchen with large windows flooding the room with natural light. The main bedroom is spacious and the second bedroom is smaller and would be ideal a guest room, study. The bathroom is has been finished to a high standard. Living here you will be minutes from all that Brixton offers, from the celebrated cuisine within Brixton Village and POP Brixton to the music venues and nightlife the area is famous for. Leafy Herne Hill is a ten-minute stroll in the opposite direction, with what many local residents regard as London's best public space, Brockwell Park, located within a short stroll. With Brixton Village, Brockwell Park and Herne Hill's pubs and restaurants all on your doorstep, there is something to cater for all tastes. In short, an exceptional property on a desirable location and close to the action. (Beds and mattress to be provided)

### Features

- Two bedrooms
- Split level
- Spacious reception room
- Modern kitchen
- Close to Brixton Station
- Minutes from high street amenities

Council tax band C      EPC rating D (68)

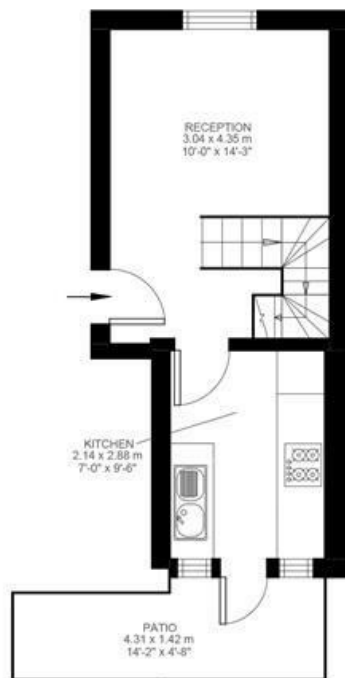




Electric Lane, Brixton, SW9

2 Bedroom Flat

Approximate internal area: **485 sqft 45 sqm**



Ground Floor



First Floor



While we do try our very best, floor plans are produced as a guide only and we take no responsibility for the precise accuracy with which any property is represented.

Electric Lane, SW9

